

FOR LEASE

FREESTANDING FULLY EQUIPPED RECORDING STUDIO WITH SEPARATE OFFICE SUITE

10800 VENTURA BLVD
10807 FRUITLAND DRIVE

STUDIO CITY CA 91604



VISIT WEBSITE



SUSAN LAU | CALDRE #01516710

📍 11661 SAN VICENTE BLVD., 10TH FL STE 1001, LA, CA 90049

📞 213.220.5466 ✉️ SUSANLAU@GMAIL.COM

ERIC SACKLER | CALDRE #01057377

📍 11661 SAN VICENTE BLVD., 10TH FL STE 1001, LA, CA 90049

📞 310.979.4990 ✉️ ERICSACKLER@GMAIL.COM

ANISA ABJI | CALRE #01369597

📍 11661 SAN VICENTE BLVD., 10TH FL STE 1001, LA, CA 90049

📞 310.709.6655 ✉️ ANISASABJI@GMAIL.COM

The property information herein is derived from various sources that may include, but not be limited to, county records and the Multiple Listing Service, and it may include approximations. Although the information is believed to be accurate, it is not warranted and you should not rely upon it without personal verification. Real estate agents affiliated with Coldwell Banker Realty are independent contractor sales associates, not employees. ©2021 Coldwell Banker. All Rights Reserved. Coldwell Banker and the Coldwell Banker logos are trademarks of Coldwell Banker Real Estate LLC. The Coldwell Banker® System is comprised of company owned offices which are owned by a subsidiary of Redology Brokerage Group LLC and franchised offices which are independently owned and operated. The Coldwell Banker System fully supports the principles of the Fair Housing Act and the Equal Opportunity Act.

THE OFFERING

SUITE	TYPE	SF	RENT	TERM
10800 Ventura Blvd. & 10807 Fruitland Dr.	Recording Studio + Office Suite	4,391 SF	* \$29,000/MO MG	Negotiable

*Rental Rate includes All Studio Equipment. Reduced Rate available without Studio Equipment.

RECORDING STUDIO AND OFFICE FEATURES

- State-of-the-Art Studio Equipment *
- Including Integrated Soundproofing + Mixing Rooms
- Also, Features Recording Lounges, Separate Office Suites with Private Entrance, Breakrooms
- Freestanding Building

LOCATION FEATURES

- Prime location for the Recording Studio and office building in Studio City neighborhood
- Corner of Ventura and Fruitland
- Convenient access to the 405 & 101 freeways
- Centrally located close to all the Major Studios: Universal City, Burbank, Culver City, Beverly Hills, Hollywood, and Century City.
- Off-Street Free and Metered Parking Plus Large Park and Ride Free Space across the Street

*Contact the Listing Agent for a full list of equipment.



SUSAN LAU | CALDRE #01516710

📍 11661 SAN VICENTE BLVD., 10TH FL STE 1001, LA, CA 90049

📞 213.220.5466 ✉️ SUSANLAU@GMAIL.COM

ERIC SACKLER | CALDRE #01057377

📍 11661 SAN VICENTE BLVD., 10TH FL STE 1001, LA, CA 90049

📞 310.979.4990 ✉️ ERICSACKLER@GMAIL.COM

ANISA ABJI | CALRE #01369597

📍 11661 SAN VICENTE BLVD., 10TH FL STE 1001, LA, CA 90049

📞 310.709.6655 ✉️ ANISASABJI@GMAIL.COM

The property information herein is derived from various sources that may include, but not be limited to, county records and the Multiple Listing Service, and it may include approximations. Although the information is believed to be accurate, it is not warranted and you should not rely upon it without personal verification. Real estate agents affiliated with Coldwell Banker Realty are independent contractor sales associates, not employees. ©2021 Coldwell Banker. All Rights Reserved. Coldwell Banker and the Coldwell Banker logos are trademarks of Coldwell Banker Real Estate LLC. The Coldwell Banker® System is comprised of company owned offices which are owned by a subsidiary of Redoxy Brokerage Group LLC and franchised offices which are independently owned and operated. The Coldwell Banker System fully supports the principles of the Fair Housing Act and the Equal Opportunity Act.

RECORDING STUDIO 10800 VENTURA BLVD



Click to View 3D Matterport



SUSAN LAU | CALDRE #01516710

📍 11661 SAN VICENTE BLVD., 10TH FL STE 1001, LA, CA 90049

📞 213.220.5466 ✉️ SUSANLAU@GMAIL.COM

ERIC SACKLER | CALDRE #01057377

📍 11661 SAN VICENTE BLVD., 10TH FL STE 1001, LA, CA 90049

📞 310.979.4990 ✉️ ERICSACKLER@GMAIL.COM

ANISA ABJI | CALRE #01369597

📍 11661 SAN VICENTE BLVD., 10TH FL STE 1001, LA, CA 90049

📞 310.709.6655 ✉️ ANISASABJI@GMAIL.COM

The property information herein is derived from various sources that may include, but not be limited to, county records and the Multiple Listing Service, and it may include approximations. Although the information is believed to be accurate, it is not warranted and you should not rely upon it without personal verification. Real estate agents affiliated with Coldwell Banker Realty are independent contractor sales associates, not employees. ©2021 Coldwell Banker. All Rights Reserved. Coldwell Banker and the Coldwell Banker logos are trademarks of Coldwell Banker Real Estate LLC. The Coldwell Banker® System is comprised of company owned offices which are owned by a subsidiary of Reology Brokerage Group LLC and franchised offices which are independently owned and operated. The Coldwell Banker System fully supports the principles of the Fair Housing Act and the Equal Opportunity Act.



OFFICE SPACE 10807 FRUITLAND DRIVE



Click to View 3D Matterport



SUSAN LAU | CALDRE #01516710

📍 11661 SAN VICENTE BLVD., 10TH FL STE 1001, LA, CA 90049

📞 213.220.5466 ✉️ SUSANLAU@GMAIL.COM

ERIC SACKLER | CALDRE #01057377

📍 11661 SAN VICENTE BLVD., 10TH FL STE 1001, LA, CA 90049

📞 310.979.4990 ✉️ ERICSACKLER@GMAIL.COM

ANISA ABJI | CALRE #01369597

📍 11661 SAN VICENTE BLVD., 10TH FL STE 1001, LA, CA 90049

📞 310.709.6655 ✉️ ANISASABJI@GMAIL.COM

The property information herein is derived from various sources that may include, but not be limited to, county records and the Multiple Listing Service, and it may include approximations. Although the information is believed to be accurate, it is not warranted and you should not rely upon it without personal verification. Real estate agents affiliated with Coldwell Banker Realty are independent contractor sales associates, not employees. ©2021 Coldwell Banker. All Rights Reserved. Coldwell Banker and the Coldwell Banker logos are trademarks of Coldwell Banker Real Estate LLC. The Coldwell Banker® System is comprised of company owned offices which are owned by a subsidiary of Reology Brokerage Group LLC and franchised offices which are independently owned and operated. The Coldwell Banker System fully supports the principles of the Fair Housing Act and the Equal Opportunity Act.

SITE MAP

10800 VENTURA BLVD.
10807 FRUITLAND DR.



SUSAN LAU | CALDRE #01516710

📍 11661 SAN VICENTE BLVD., 10TH FL STE 1001, LA, CA 90049

📞 213.220.5466 ✉️ SUSANLAU@GMAIL.COM

ERIC SACKLER | CALDRE #01057377

📍 11661 SAN VICENTE BLVD., 10TH FL STE 1001, LA, CA 90049

📞 310.979.4990 ✉️ ERICSACKLER@GMAIL.COM

ANISA ABJI | CALRE #01369597

📍 11661 SAN VICENTE BLVD., 10TH FL STE 1001, LA, CA 90049

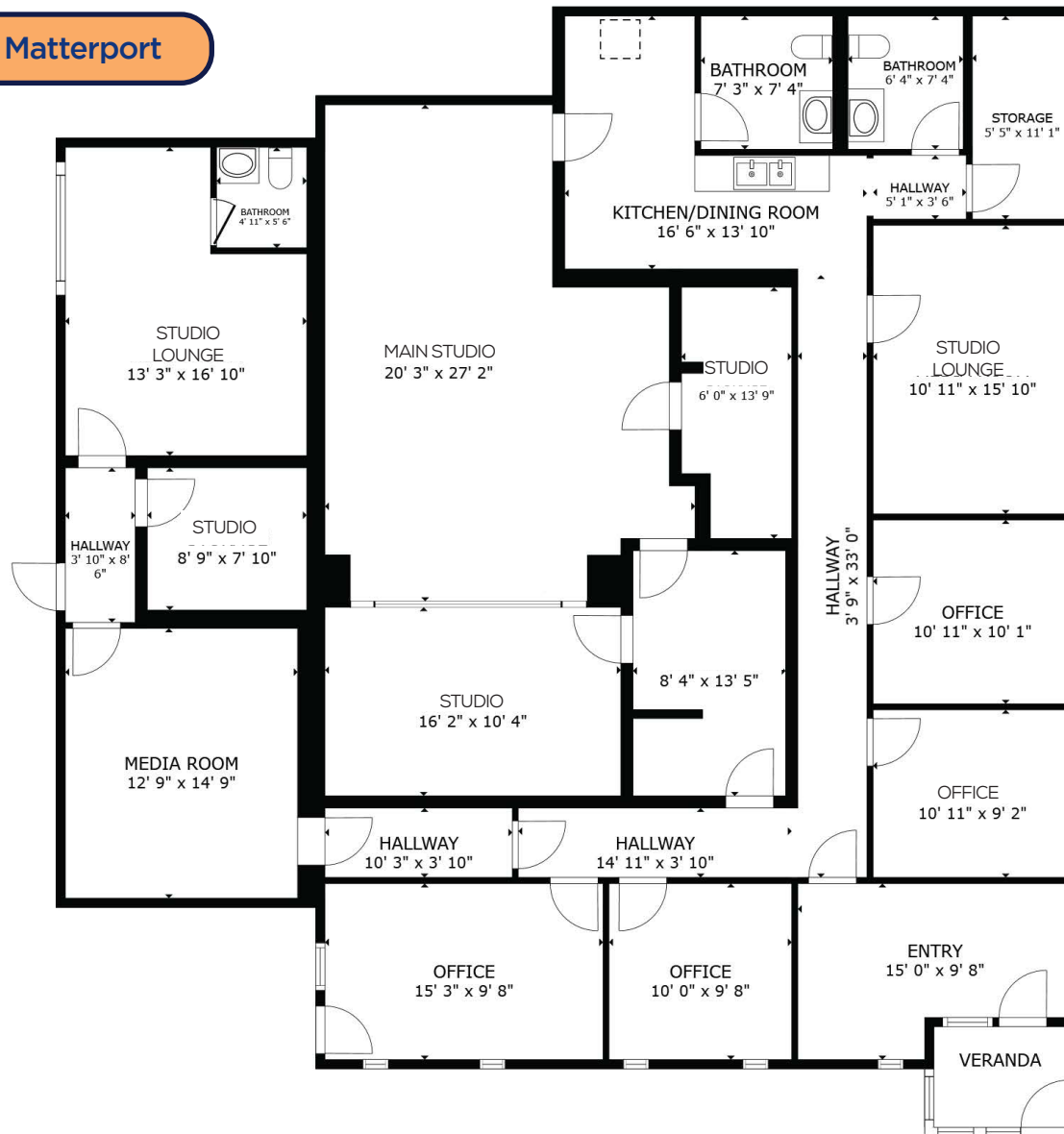
📞 310.709.6655 ✉️ ANISASABJI@GMAIL.COM

The property information herein is derived from various sources that may include, but not be limited to, county records and the Multiple Listing Service, and it may include approximations. Although the information is believed to be accurate, it is not warranted and you should not rely upon it without personal verification. Real estate agents affiliated with Coldwell Banker Realty are independent contractor sales associates, not employees. ©2021 Coldwell Banker. All Rights Reserved. Coldwell Banker and the Coldwell Banker logos are trademarks of Coldwell Banker Real Estate LLC. The Coldwell Banker® System is comprised of company owned offices which are owned by a subsidiary of Reology Brokerage Group LLC and franchised offices which are independently owned and operated. The Coldwell Banker System fully supports the principles of the Fair Housing Act and the Equal Opportunity Act.

RECORDING STUDIO FLOOR PLAN



Click to View 3D Matterport



SUSAN LAU | CALDRE #01516710

📍 11661 SAN VICENTE BLVD., 10TH FL STE 1001, LA, CA 90049

📞 213.220.5466 ✉️ SUSANLAU@GMAIL.COM

ERIC SACKLER | CALDRE #01057377

📍 11661 SAN VICENTE BLVD., 10TH FL STE 1001, LA, CA 90049

📞 310.979.4990 ✉️ ERICSACKLER@GMAIL.COM

ANISA ABJI | CALRE #01369597

📍 11661 SAN VICENTE BLVD., 10TH FL STE 1001, LA, CA 90049

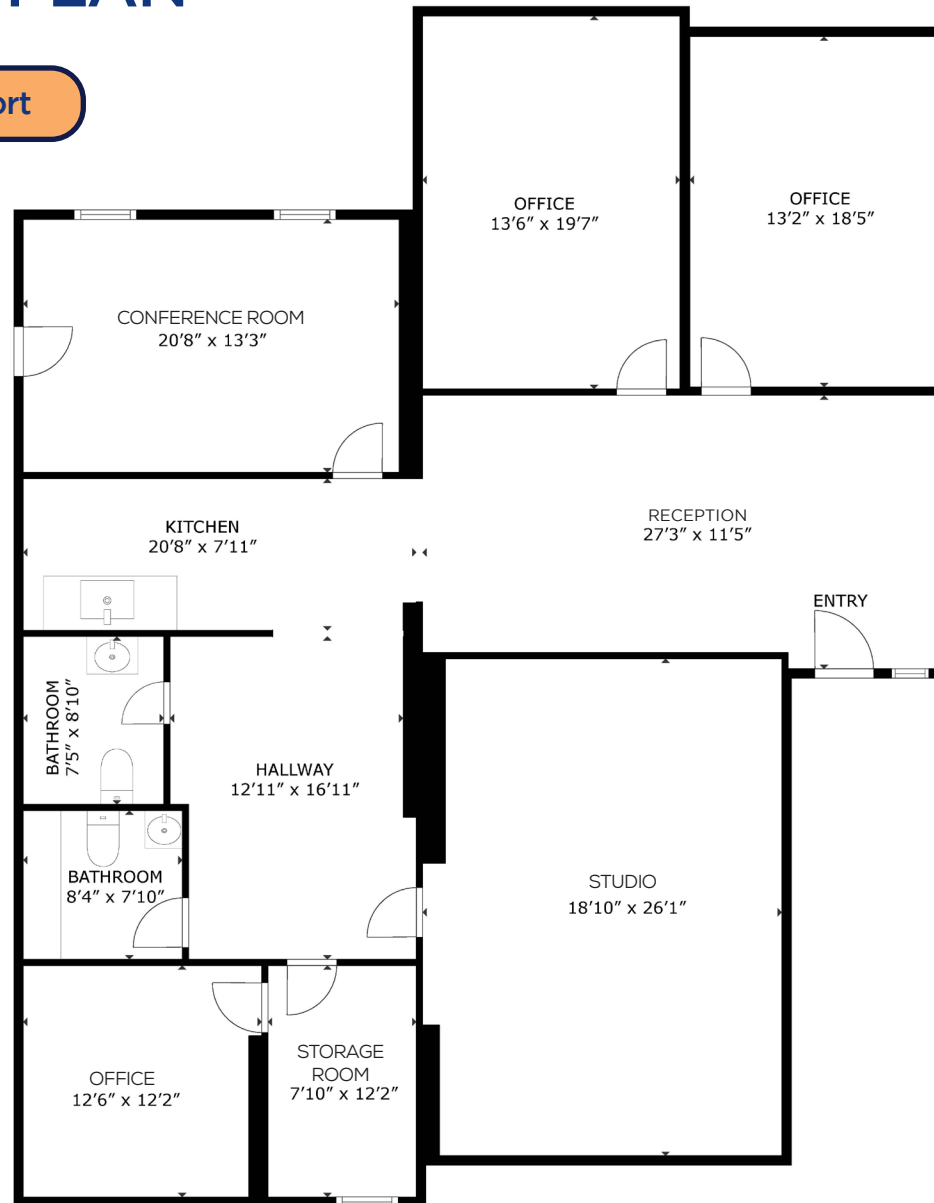
📞 310.709.6655 ✉️ ANISASABJI@GMAIL.COM

The property information herein is derived from various sources that may include, but not be limited to, county records and the Multiple Listing Service, and it may include approximations. Although the information is believed to be accurate, it is not warranted and you should not rely upon it without personal verification. Real estate agents affiliated with Coldwell Banker Realty are independent contractor sales associates, not employees. ©2021 Coldwell Banker. All Rights Reserved. Coldwell Banker and the Coldwell Banker logos are trademarks of Coldwell Banker Real Estate LLC. The Coldwell Banker® System is comprised of company owned offices which are owned by a subsidiary of Redoxy Brokerage Group LLC and franchised offices which are independently owned and operated. The Coldwell Banker System fully supports the principles of the Fair Housing Act and the Equal Opportunity Act.

OFFICE FLOOR PLAN



Click to View 3D Matterport



SUSAN LAU | CALDRE #01516710

📍 11661 SAN VICENTE BLVD., 10TH FL STE 1001, LA, CA 90049

📞 213.220.5466 ✉️ SUSANLAU@GMAIL.COM

ERIC SACKLER | CALDRE #01057377

📍 11661 SAN VICENTE BLVD., 10TH FL STE 1001, LA, CA 90049

📞 310.979.4990 ✉️ ERICSACKLER@GMAIL.COM

ANISA ABJI | CALRE #01369597

📍 11661 SAN VICENTE BLVD., 10TH FL STE 1001, LA, CA 90049

📞 310.709.6655 ✉️ ANISASABJI@GMAIL.COM

The property information herein is derived from various sources that may include, but not be limited to, county records and the Multiple Listing Service, and it may include approximations. Although the information is believed to be accurate, it is not warranted and you should not rely upon it without personal verification. Real estate agents affiliated with Coldwell Banker Realty are independent contractor sales associates, not employees. ©2021 Coldwell Banker. All Rights Reserved. Coldwell Banker and the Coldwell Banker logos are trademarks of Coldwell Banker Real Estate LLC. The Coldwell Banker® System is comprised of company owned offices which are owned by a subsidiary of Redoxy Brokerage Group LLC and franchised offices which are independently owned and operated. The Coldwell Banker System fully supports the principles of the Fair Housing Act and the Equal Opportunity Act.



SUSAN LAU | CALDRE #01516710

📍 11661 SAN VICENTE BLVD., 10TH FL STE 1001, LA, CA 90049
 📞 213.220.5466 ✉️ SUSANLAU@GMAIL.COM

ERIC SACKLER | CALDRE #01057377

📍 11661 SAN VICENTE BLVD., 10TH FL STE 1001, LA, CA 90049
 📞 310.979.4990 ✉️ ERICSACKLER@GMAIL.COM

ANISA ABJI | CALRE #01369597

📍 11661 SAN VICENTE BLVD., 10TH FL STE 1001, LA, CA 90049
 📞 310.709.6655 ✉️ ANISASABJI@GMAIL.COM

The property information herein is derived from various sources that may include, but not be limited to, county records and the Multiple Listing Service, and it may include approximations. Although the information is believed to be accurate, it is not warranted and you should not rely upon it without personal verification. Real estate agents affiliated with Coldwell Banker Realty are independent contractor sales associates, not employees. ©2021 Coldwell Banker. All Rights Reserved. Coldwell Banker and the Coldwell Banker logos are trademarks of Coldwell Banker Real Estate LLC. The Coldwell Banker® System is comprised of company owned offices which are owned by a subsidiary of Reology Brokerage Group LLC and franchised offices which are independently owned and operated. The Coldwell Banker System fully supports the principles of the Fair Housing Act and the Equal Opportunity Act.

10800 VENTURA BLVD 10807 FRUITLAND DRIVE STUDIO CITY CA 91604

Susan Lau
310 979 3960
susanlau@gmail.com
CalDRE #01516710

Eric Sackler
310 979 4990
ericsackler@gmail.com
CalDRE #01057377

Anisa Abji
310 709 6655
anisasabji@gmail.com
CalRE #01369597



11661 San Vicente Blvd Fl 10, Los Angeles, CA 90049
310.820.6651
www.cbcworldwide.com