



First Citizens Bank

FOR LEASE

**HIGH-IDENTITY
BANK/RETAIL SPACE
WITH VAULT**

12401 WILSHIRE BOULEVARD
SUITE 100
LOS ANGELES, CA 90025

CORNER OF WILSHIRE BLVD. AND CARMELINA IN BRENTWOOD



ERIC SACKLER | CALDRE #01057377

📍 11661 SAN VICENTE BLVD., 10TH FL STE 1001, LA, CA 90049

📞 310.979.4990 ✉ ERICSACKLER@GMAIL.COM

SUSAN LAU | CALDRE #01516710

📍 11661 SAN VICENTE BLVD., 10TH FL STE 1001, LA, CA 90049

📞 213.220.5466 ✉ SUSANLAU@GMAIL.COM



The property information herein is derived from various sources that may include, but not be limited to, county records and the Multiple Listing Service, and it may include approximations. Although the information is believed to be accurate, it is not warranted and you should not rely upon it without personal verification. Real estate agents affiliated with Coldwell Banker Realty are independent contractor sales associates, not employees. ©2021 Coldwell Banker. All Rights Reserved. Coldwell Banker and the Coldwell Banker logos are trademarks of Coldwell Banker Real Estate LLC. The Coldwell Banker® System is comprised of company owned offices which are owned by a subsidiary of Realty Brokerage Group LLC and franchised offices which are independently owned and operated. The Coldwell Banker System fully supports the principles of the Fair Housing Act and the Equal Opportunity Act.

12401 WILSHIRE BOULEVARD SUITE 100
LOS ANGELES, CA 90025

SUITE	SF AVAIL	RENT	TERM	USE
100	2,309	\$5.50/SF/Mo (+NNN)	Negotiable	Bank / Retail

OPPORTUNITY HIGHLIGHTS

- High identity bank/retail space with vault
- 70 feet of storefront window frontage and Three 22-foot wide eyebrow signage positions along Wilshire Blvd. and Carmelina Ave.
- Highly professional building with its exterior and facade renovated in 2020
- Ideally located at the corner of Wilshire Blvd and Carmelina Ave near Centinela Ave - 4,796 cars per day
- 80 surface parking spaces for tenants and their clients
- Centrally Located at the confluence of Brentwood, Santa Monica and West L.A. with convenient access to the 405 and 10 freeways
- Direct Lease Available June 1, 2025



ERIC SACKLER | CALDRE #01057377
📞 310 979 4990 ✉ ERICSACKLER@GMAIL.COM

SUSAN LAU | CALDRE #01516710
📞 213.220.5466 ✉ SUSANLAU@GMAIL.COM

The property information herein is derived from various sources that may include, but not be limited to, county records and the Multiple Listing Service, and it may include approximations. Although the information is believed to be accurate, it is not warranted and you should not rely upon it without personal verification. Real estate agents affiliated with Coldwell Banker Realty are independent contractor sales associates, not employees. ©2021 Coldwell Banker. All Rights Reserved. Coldwell Banker and the Coldwell Banker logos are trademarks of Coldwell Banker Real Estate LLC. The Coldwell Banker® System is comprised of company owned offices which are owned by a subsidiary of Realty Brokerage Group LLC and franchised offices which are independently owned and operated. The Coldwell Banker System fully supports the principles of the Fair Housing Act and the Equal Opportunity Act.

12401 WILSHIRE BOULEVARD SUITE 100
LOS ANGELES, CA 90025

SPACE DESCRIPTION

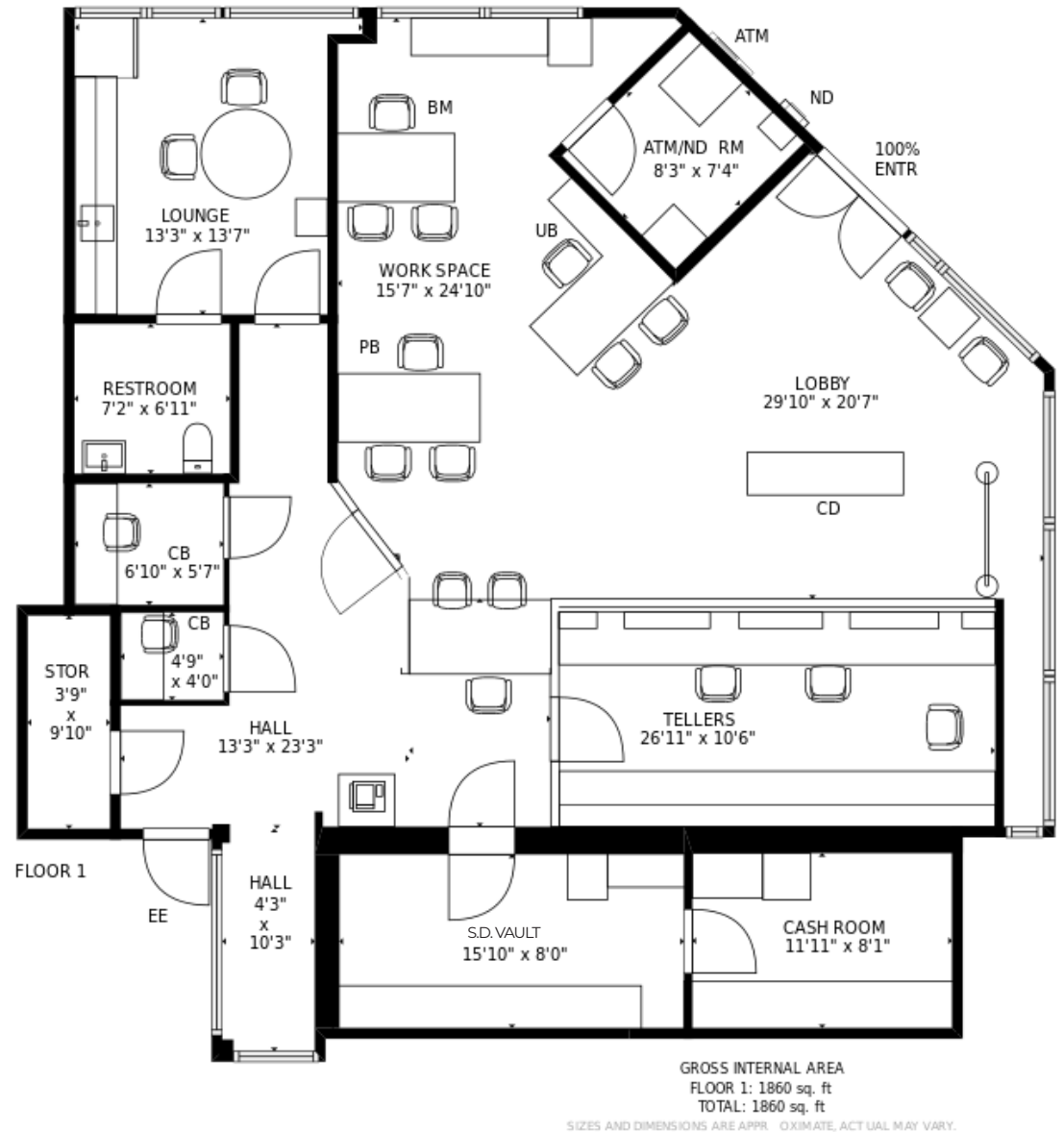
2,309 rentable square feet of high identity Bank / Retail space in professional office building on the corner of Wilshire Blvd & Carmelina. Ave., in the Brentwood/West Los Angeles submarket.

Building's facade and exterior were renovated in 2020, and all interior space fully renovated. Excellent signage opportunity with three separate 22-foot wide highly visible eyebrow signage positions for maximum exposure.

Approximately 70-feet of storefront window frontage along Wilshire Blvd. 80 surface parking spaces next to building.

This prominent location has great traffic counts of 4,796 cars per day @ Wilshire & Centinela, an impressive Walk Score of 87 and Transit Score of 63. Plenty of surface parking.

This direct lease is available starting June 1, 2025.



ERIC SACKLER | CALDRE #01057377
📞 310 979 4990 ✉ ERICSACKLER@GMAIL.COM

SUSAN LAU | CALDRE #01516710
📞 213.220.5466 ✉ SUSANLAU@GMAIL.COM

The property information herein is derived from various sources that may include, but not be limited to, county records and the Multiple Listing Service, and it may include approximations. Although the information is believed to be accurate, it is not warranted and you should not rely upon it without personal verification. Real estate agents affiliated with Coldwell Banker Realty are independent contractor sales associates, not employees. ©2021 Coldwell Banker. All Rights Reserved. Coldwell Banker and the Coldwell Banker logos are trademarks of Coldwell Banker Real Estate LLC. The Coldwell Banker® System is comprised of company owned offices which are owned by a subsidiary of Realty Brokerage Group LLC and franchised offices which are independently owned and operated. The Coldwell Banker System fully supports the principles of the Fair Housing Act and the Equal Opportunity Act.

AMENITIES MAP

SAN VICENTE BLVD

BRENTWOOD
Country Club

ROSS
DRESS FOR LESS

Ralphs
fresh fare

PAPA JOHN'S
SUBWAY

12401 WILSHIRE
BLVD SUITE 100

MATTRESS FIRM

McDonald's
KFC

TARGET

IHOP
metro
by F Mobile
7
ELEVEN

El Pollo Loco

CARMELINA ST

Bristol Farms

metro
by F Mobile

the Habit
BURGER GRILL

CVS
pharmacy
BevMo!

SANTA MONICA BLVD

CHASE

BIG 5
SPORTING GOODS

PADERIA
BAKEHOUSE

MONTANA AVE

Starbucks

milo
love

the Vitamin
Shoppe

petco

Sit n Sleep
YOUR MATTRESS SUPERSTORE

Days Inn

DEL TACO
BETTER MEX

EREWHON

Comfort

20TH ST

WELLS FARGO

new balance

McDonald's

20TH ST

CHIPOTLE
MEXICAN GRILL

FedEx

verizon

Jonah's
KITCHEN + BAR

Carl's Jr.

WHOLE FOODS
MARKET

TRADER JOE'S

CVS
pharmacy

Volkswagen

Walgreens

Gas
LITE

Providence

GAP

fromin's
DELICATESSEN
RESTAURANT

TARTINE



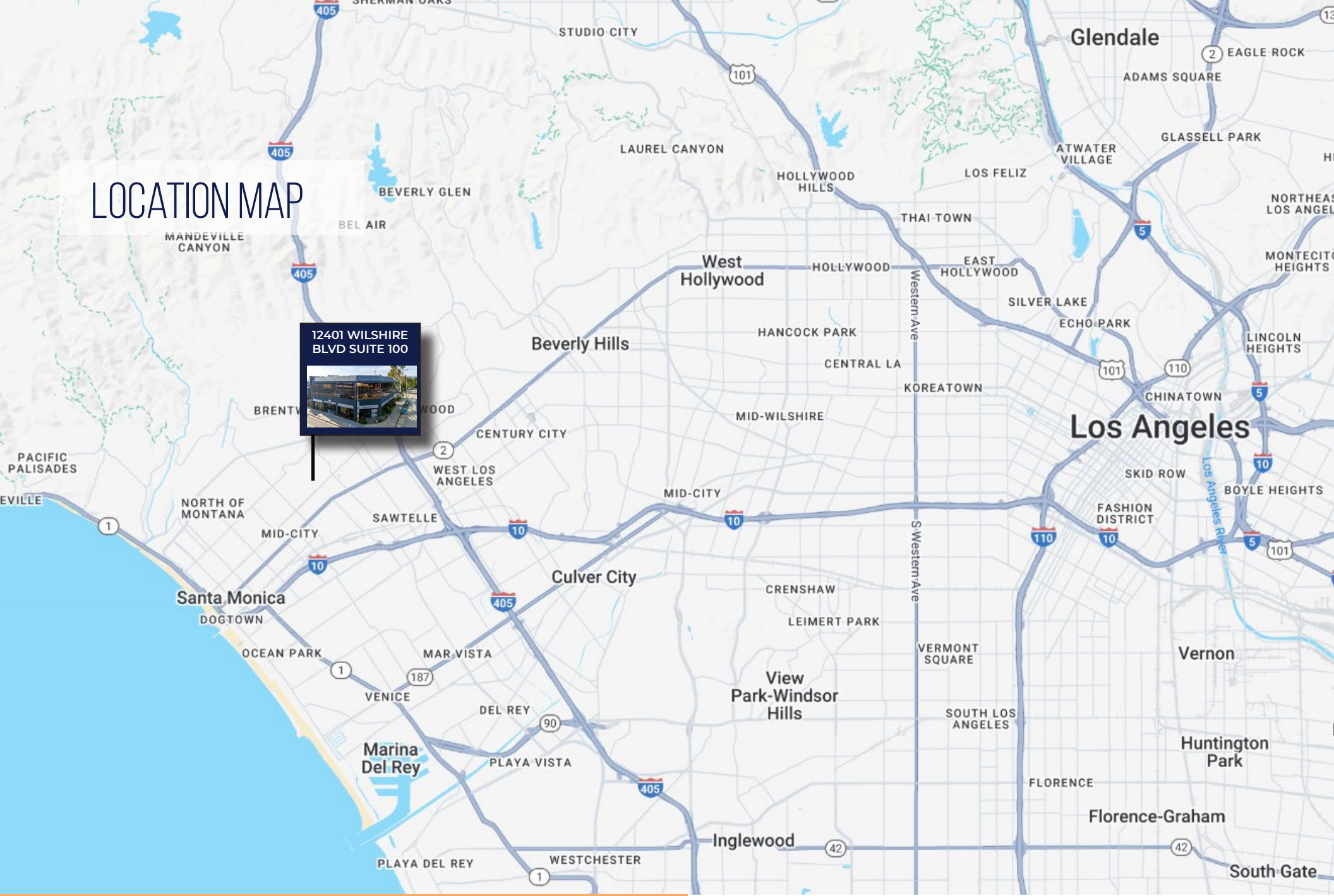
ERIC SACKLER | CALDRE #01057377
310 979 4990 ERICSACKLER@GMAIL.COM

SUSAN LAU | CALDRE #01516710
213.220.5466 SUSANLAU@GMAIL.COM

The property information herein is derived from various sources that may include, but not be limited to, county records and the Multiple Listing Service, and it may include approximations. Although the information is believed to be accurate, it is not warranted and you should not rely upon it without personal verification. Real estate agents affiliated with Coldwell Banker Realty are independent contractor sales associates, not employees. ©2021 Coldwell Banker. All Rights Reserved. Coldwell Banker and the Coldwell Banker logos are trademarks of Coldwell Banker Real Estate LLC. The Coldwell Banker® System is comprised of company owned offices which are owned by a subsidiary of Realty Brokerage Group LLC and franchised offices which are independently owned and operated. The Coldwell Banker System fully supports the principles of the Fair Housing Act and the Equal Opportunity Act.

LOCATION MAP

12401 WILSHIRE
BLVD SUITE 100



ERIC SACKLER | CALDRE #01057377
📞 310.979.4990 ✉ ERICSACKLER@GMAIL.COM

SUSAN LAU | CALDRE #01516710
📞 213.220.5466 ✉ SUSANLAU@GMAIL.COM

The property information herein is derived from various sources that may include, but not be limited to, county records and the Multiple Listing Service, and it may include approximations. Although the information is believed to be accurate, it is not warranted and you should not rely upon it without personal verification. Real estate agents affiliated with Coldwell Banker Realty are independent contractor sales associates, not employees. ©2021 Coldwell Banker. All Rights Reserved. Coldwell Banker and the Coldwell Banker logos are trademarks of Coldwell Banker Real Estate LLC. The Coldwell Banker® System is comprised of company owned offices which are owned by a subsidiary of Realty Brokerage Group LLC and franchised offices which are independently owned and operated. The Coldwell Banker System fully supports the principles of the Fair Housing Act and the Equal Opportunity Act.