

FOR LEASE

OFFICE SPACE IN THE
HEART OF BRENTWOOD

11661 SAN VICENTE BLVD
LOS ANGELES, CA 90025



ERIC SACKLER | CALDRE #01057377

📍 11661 SAN VICENTE BLVD., 10TH FL STE 1001, LA, CA 90049

📞 310.979.4990 ✉️ ERICSACKLER@GMAIL.COM

SUSAN LAU | CALDRE #01516710

📍 11661 SAN VICENTE BLVD., 10TH FL STE 1001, LA, CA 90049

📞 213.220.5466 ✉️ SUSANLAU@GMAIL.COM

The property information herein is derived from various sources that may include, but not be limited to, county records and the Multiple Listing Service, and it may include approximations. Although the information is believed to be accurate, it is not warranted and you should not rely upon it without personal verification. Real estate agents affiliated with Coldwell Banker Realty are independent contractor sales associates, not employees. ©2021 Coldwell Banker. All Rights Reserved. Coldwell Banker and the Coldwell Banker logos are trademarks of Coldwell Banker Real Estate LLC. The Coldwell Banker® System is comprised of company owned offices which are owned by a subsidiary of Realogy Brokerage Group LLC and franchised offices which are independently owned and operated. The Coldwell Banker System fully supports the principles of the Fair Housing Act and the Equal Opportunity Act.



ERIC SACKLER | CALDRE #01057377
📞 310 979 4990 ✉️ ERICSACKLER@GMAIL.COM

SUSAN LAU | CALDRE #01516710
📞 213.220.5466 ✉️ SUSANLAU@GMAIL.COM

The property information herein is derived from various sources that may include, but not be limited to, county records and the Multiple Listing Service, and it may include approximations. Although the information is believed to be accurate, it is not warranted and you should not rely upon it without personal verification. Real estate agents affiliated with Coldwell Banker Realty are independent contractor sales associates, not employees. ©2021 Coldwell Banker. All Rights Reserved. Coldwell Banker and the Coldwell Banker logos are trademarks of Coldwell Banker Real Estate LLC. The Coldwell Banker® System is comprised of company owned offices which are owned by a subsidiary of Realty Brokerage Group LLC and franchised offices which are independently owned and operated. The Coldwell Banker System fully supports the principles of the Fair Housing Act and the Equal Opportunity Act.

11661 SAN VICENTE BOULEVARD SUITE AVAILABILITY

SUITE	VIEW	RSF	RATE	NOTES
500	SW	1,648	Negotiable/FSG	DIVISIBLE
840	SE	1,992	Negotiable/FSG	
1020	SE	4,439	\$5.20/FSG	

BUILDING FEATURES

- Café
- Convenience store
- 24-hour security
- View suites
- Retail tenants include Union Bank, Baltaire Restaurant & Orangetheory

LOCATION FEATURES

- 1/2 block from Barrington Avenue
- Near Brentwood's most popular shops & restaurants
- Convenient access to 405 freeway
- Easy access to many residential neighborhoods



ERIC SACKLER | CALDRE #01057377
📞 310 979 4990 ✉️ ERICSACKLER@GMAIL.COM

The property information herein is derived from various sources that may include, but not be limited to, county records and the Multiple Listing Service, and it may include approximations. Although the information is believed to be accurate, it is not warranted and you should not rely upon it without personal verification. Real estate agents affiliated with Coldwell Banker Realty are independent contractor sales associates, not employees. ©2021 Coldwell Banker. All Rights Reserved. Coldwell Banker and the Coldwell Banker logos are trademarks of Coldwell Banker Real Estate LLC. The Coldwell Banker® System is comprised of company owned offices which are owned by a subsidiary of Realty Brokerage Group LLC and franchised offices which are independently owned and operated. The Coldwell Banker System fully supports the principles of the Fair Housing Act and the Equal Opportunity Act.

SUSAN LAU | CALDRE #01516710
📞 213.220.5466 ✉️ SUSANLAU@GMAIL.COM

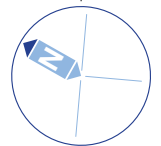
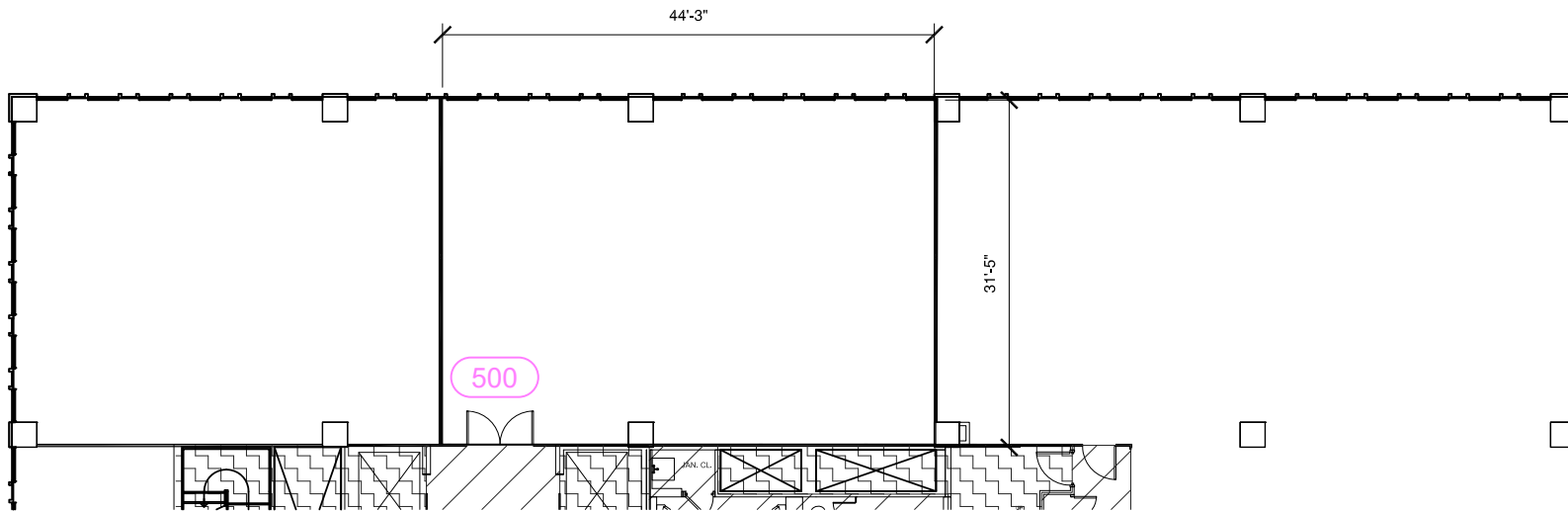
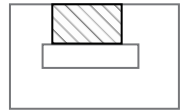
FLOOR PLAN 500

Negotiable /FSG

TOTAL USABLE
Sq Ft
1,397

TOTAL RENTABLE
Sq Ft
1,648

UNIT LOCATION >>>



*FLOOR PLAN CAN BE MODIFIED



ERIC SACKLER | CALDRE #01057377

☎ 310 979 4990 ✉ ERICSACKLER@GMAIL.COM

The property information herein is derived from various sources that may include, but not be limited to, county records and the Multiple Listing Service, and it may include approximations. Although the information is believed to be accurate, it is not warranted and you should not rely upon it without personal verification. Real estate agents affiliated with Coldwell Banker Realty are independent contractor sales associates, not employees. ©2021 Coldwell Banker. All Rights Reserved. Coldwell Banker and the Coldwell Banker logos are trademarks of Coldwell Banker Real Estate LLC. The Coldwell Banker® System is comprised of company owned offices which are owned by a subsidiary of Realty Brokerage Group LLC and franchised offices which are independently owned and operated. The Coldwell Banker System fully supports the principles of the Fair Housing Act and the Equal Opportunity Act.

SUSAN LAU | CALDRE #01516710

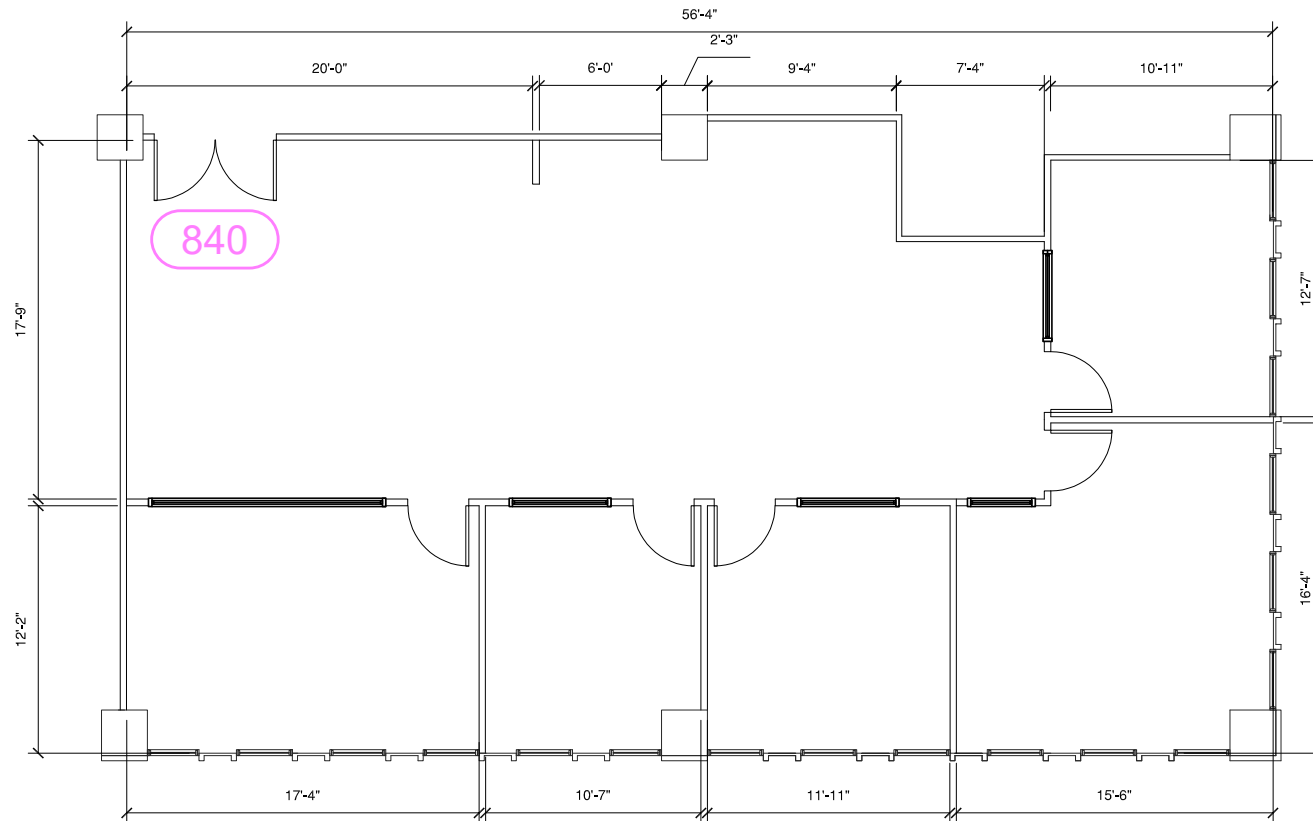
☎ 213.220.5466 ✉ SUSANLAU@GMAIL.COM

FLOOR PLAN 840

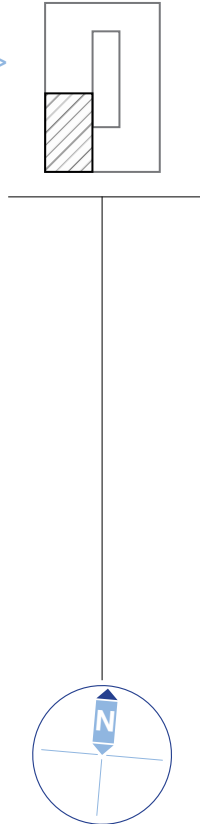
Negotiable /FSG

TOTAL USABLE
Sq Ft
1,688

TOTAL RENTABLE
Sq Ft
1,992



UNIT LOCATION >>>



*FLOOR PLAN CAN BE MODIFIED



ERIC SACKLER | CALDRE #01057377
 ☎ 310 979 4990 ✉ ERICSACKLER@GMAIL.COM

The property information herein is derived from various sources that may include, but not be limited to, county records and the Multiple Listing Service, and it may include approximations. Although the information is believed to be accurate, it is not warranted and you should not rely upon it without personal verification. Real estate agents affiliated with Coldwell Banker Realty are independent contractor sales associates, not employees. ©2021 Coldwell Banker. All Rights Reserved. Coldwell Banker and the Coldwell Banker logos are trademarks of Coldwell Banker Real Estate LLC. The Coldwell Banker® System is comprised of company owned offices which are owned by a subsidiary of Realty Brokerage Group LLC and franchised offices which are independently owned and operated. The Coldwell Banker System fully supports the principles of the Fair Housing Act and the Equal Opportunity Act.

SUSAN LAU | CALDRE #01516710
 ☎ 213.220.5466 ✉ SUSANLAU@GMAIL.COM

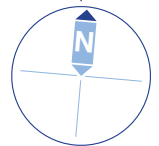
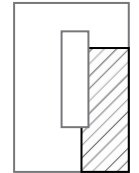
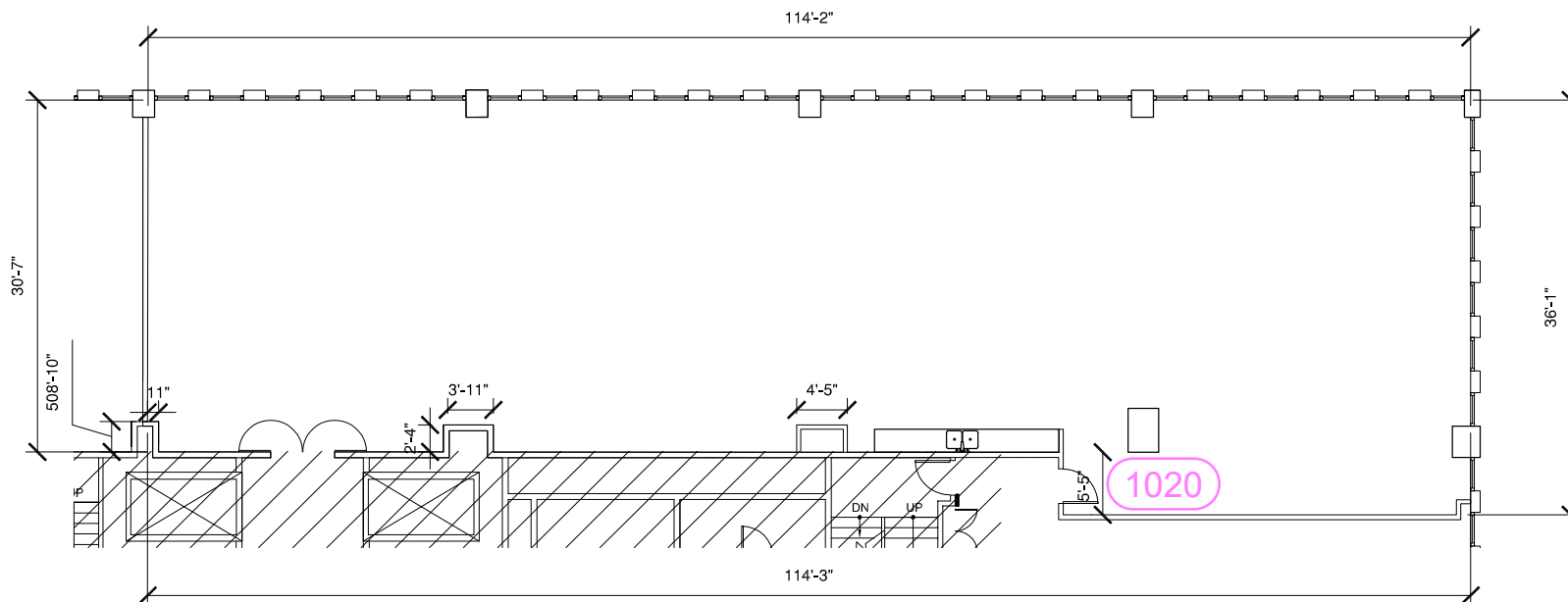
FLOOR PLAN 1020

\$5.20 SQFT/MO

TOTAL USABLE
Sq Ft
3,762

TOTAL RENTABLE
Sq Ft
4,439

UNIT LOCATION >>>



*FLOOR PLAN CAN BE MODIFIED



ERIC SACKLER | CALDRE #01057377

📞 310 979 4990 ✉️ ERICSACKLER@GMAIL.COM

The property information herein is derived from various sources that may include, but not be limited to, county records and the Multiple Listing Service, and it may include approximations. Although the information is believed to be accurate, it is not warranted and you should not rely upon it without personal verification. Real estate agents affiliated with Coldwell Banker Realty are independent contractor sales associates, not employees. ©2021 Coldwell Banker. All Rights Reserved. Coldwell Banker and the Coldwell Banker logos are trademarks of Coldwell Banker Real Estate LLC. The Coldwell Banker® System is comprised of company owned offices which are owned by a subsidiary of Realty Brokerage Group LLC and franchised offices which are independently owned and operated. The Coldwell Banker System fully supports the principles of the Fair Housing Act and the Equal Opportunity Act.

SUSAN LAU | CALDRE #01516710

📞 213.220.5466 ✉️ SUSANLAU@GMAIL.COM