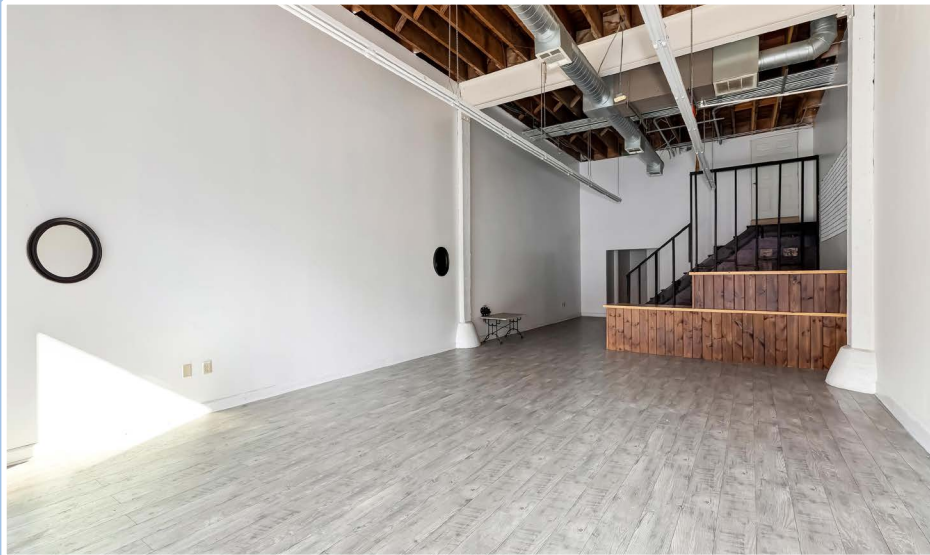


RETAIL SPACE IN THE HEART OF DOWNTOWN'S FASHION DISTRICT

1048 S. LOS ANGELES ST. LOS ANGELES, CA 90015



SUITE	RSF	MONTHLY RENT	NOTES
203A	275	\$1,540	
203	1,222	\$3,950	+400 SF Mezz
209	1,008	\$3,600	+200 SF Mezz
H	150	\$350	Storage Unit

LOCATION HIGHLIGHTS



Within a mile of the California Market Center, Staples Center, LA Live, LA Convention Center, Santee Alley and the Flower Market.



Signalized corner in prime Fashion District location.



Close proximity billions of dollars of recent commercial and residential developments.



Great demographics

ERIC SACKLER | CaIDRE 01057377
310 979 4990 | ERICSACKLER@GMAIL.COM

DANIEL EIM | CaIDRE 01939245
310 413 3463 | DANNYCEIM@GMAIL.COM



The property information herein is derived from various sources that may include, but not be limited to, county records and the Multiple Listing Service, and it may include approximations. Although the information is believed to be accurate, it is not warranted and you should not rely upon it without personal verification. Real estate agents affiliated with Coldwell Banker Realty are independent contractor sales associates, not employees. ©2021 Coldwell Banker. All Rights Reserved. Coldwell Banker and the Coldwell Banker logos are trademarks of Coldwell Banker Real Estate LLC. The Coldwell Banker® System is comprised of company owned offices which are owned by a subsidiary of Realogy Brokerage Group LLC and franchised offices which are independently owned and operated. The Coldwell Banker System fully supports the principles of the Fair Housing Act and the Equal Opportunity Act. [Equal Housing Logo]